

Climate Science and Policy for Nonscientists

One Picture is Worth a Thousand Words.

Gore: Polar ice cap may disappear by summer 2014

Comment | Recommend 404 | Tweet 8 | +1 0

By Douglas Stanglin, USA TODAY
Updated 2009-12-14 4:36 PM

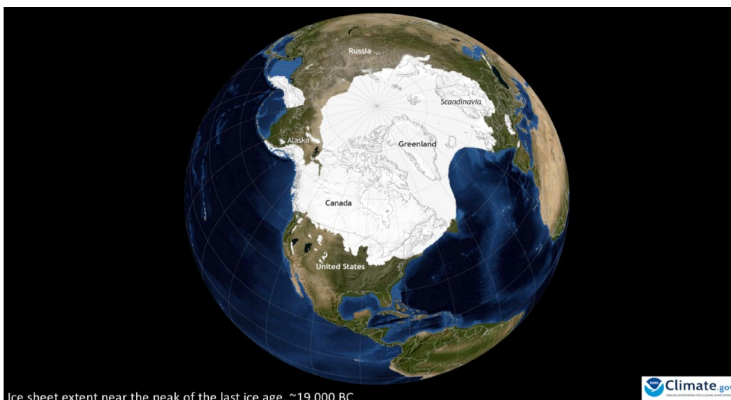
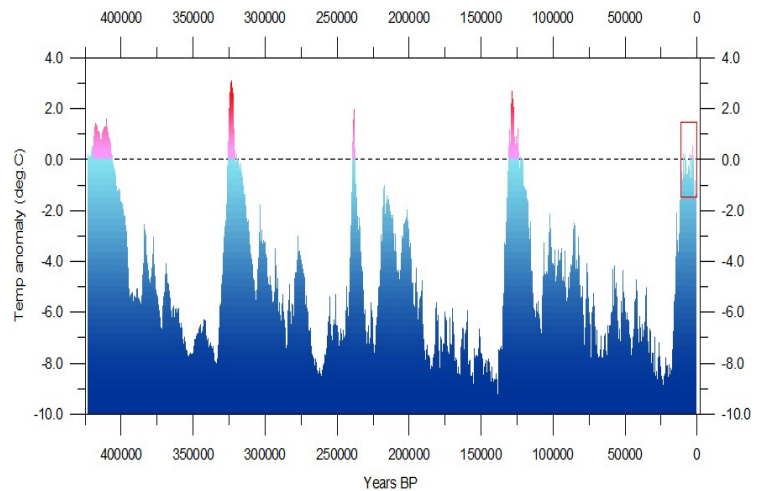
New computer modeling suggests the Arctic Ocean may be nearly ice-free in summer as early as 2014, Al Gore said today at the U.N. climate conference in Copenhagen.



AL GORE'S NEW CRISIS

Since at least 1992 when his first book was published, Al Gore has been warning about imminent, dangerous global warming. It has not happened. People are losing interest. So, in a speech last month, Gore warned of a new crisis: imminent, dangerous glaciation. Gore is correct that there is a real danger of a serious glaciation, but it is not at all imminent and not caused by human activity.

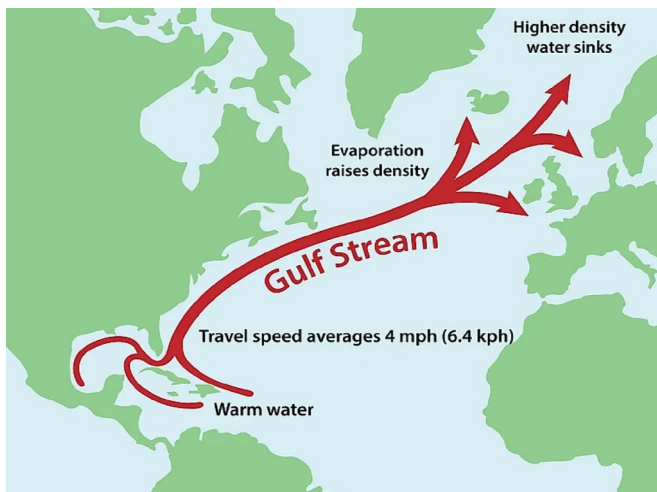
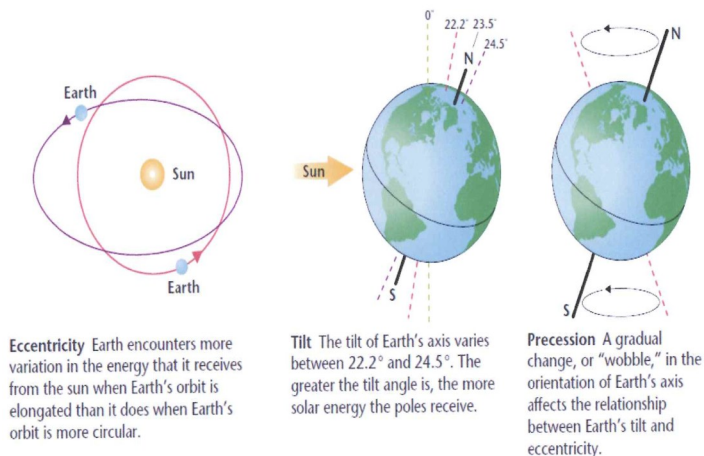
For the last 900,000 years the earth has had 100,000 year cycles of glaciations and short warm periods. The five most recent ones are shown in the graph. Past warm periods have been significantly warmer than our present one (the Holocene Interglacial), but the Holocene has already lasted longer than past glaciations. Some say we are overdue for the beginning of the next glaciation. Human-caused global warming may be delaying the onset of falling temperatures.



Ice sheet extent near the peak of the last ice age, ~19,000 BC. Image by Climate.gov based on data from the University of Zurich Applied Sciences, provided by Science on a Sphere. Original image from climate.gov resized and reformatted by A. Watts.

20,000 years ago ice covered all of Canada, New England, New York, and other parts of the Northern US. Also covered were Scandinavia, the British Isles, and parts of Northern Europe and Russia.

Scientists generally attribute these 100,000 cycles to the Milankovitch Cycles, three slight variations in the way the earth moves around the sun and around its axis. The general consensus is that the next glaciation may not start for thousands of years, and, when it does start the rate of cooling will be slow.



Gore now claims that glaciation will be caused by a Gulf Stream collapse that could occur within 25 years. But Gulf Stream collapse can not cause significant glaciation, because the Gulf Stream only affects the distribution of heat within the earth system. Thus its collapse can not cause the earth, as a whole, to get colder. And the IPCC concludes that, while the major Atlantic currents may well weaken some over the 21st century, any abrupt collapse before 2100 is unlikely, and that, if such a collapse were to occur, the effects would be regional with no mention of glaciation. [AR6, WGI, p.27 (2021)].

THE UN HAS A REAL CRISIS

For nearly 40 years the UN has been a leading advocate of a looming global warming/climate change crisis. Now the UN is facing a crisis of its own - financial. It is reported that in two months it could run out of cash and be unable to pay vendors or to meet payroll. The Secretary-General says he "cannot overstate the urgency of the situation."

The screenshot shows a news article from June 29, 1989, by Peter James Spielmann. The article reports that a senior U.N. environmental official predicted that entire nations could be wiped off the face of the Earth by rising sea levels if global warming is not reversed by the year 2000. The article also mentions that coastal flooding and crop failures would create an exodus of "eco-refugees," threatening political chaos.



ICAO
INTERNATIONAL CIVIL AVIATION ORGANIZATION

Key Facts About ICAO:

Full Name	International Civil Aviation Organization
Established	7 December 1944 (Chicago Convention)
Headquarters	Montreal, Quebec, Canada
Members	193 countries (same as UN member states)
Official Languages	English, French, Spanish, Arabic, Chinese, Russian

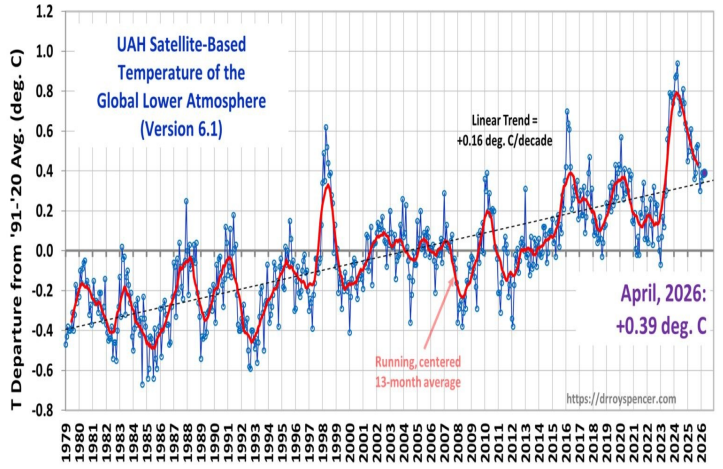
ICAO's Main Roles:

- Set Global Aviation Standards** Safety, security, efficiency, and environmental protection. Develops Standards and Recommendations (SARPs) for international aviation (SARPs)
- Air Navigation** Oversees airspace and flight procedures Promotes seamless air traffic management worldwide
- Aircraft Registration & Licensing** Coordinates aircraft identification codes (e.g. 9M-for Malaysia) Sets standards for pilot licensing and maintenance certification
- Promotes Aviation Safety** Conducts audits through the Universal Safety Oversight Audit Programme (USOAP)
- Environmental Protection** Leads efforts reduce aviation's environmental impact (e.g. CORSIA)

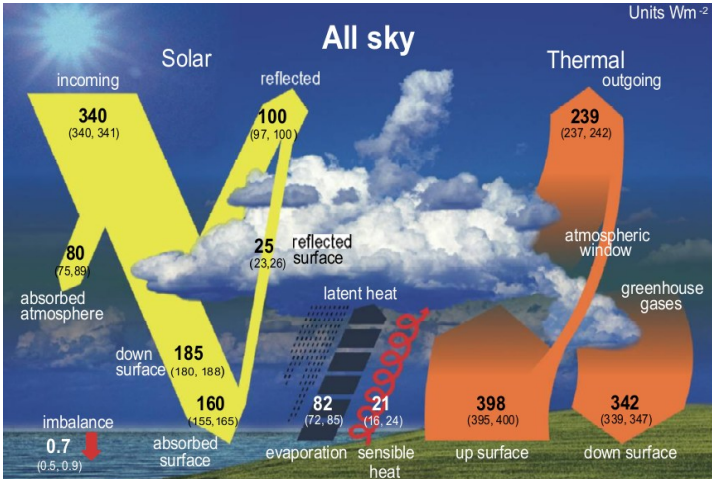
In the name of fighting climate change the UN, through its agency, the International Aviation Organization, is now trying to impose a tax on international aviation. The UN has never been given the power to tax. Last year it tried to impose a tax on global shipping through its agency, the International Maritime Organization. The US blocked that effort. The UN has a long history of trying to use global warming/climate change alarmism to enhance its power.

CURRENT WORLD TEMPERATURES

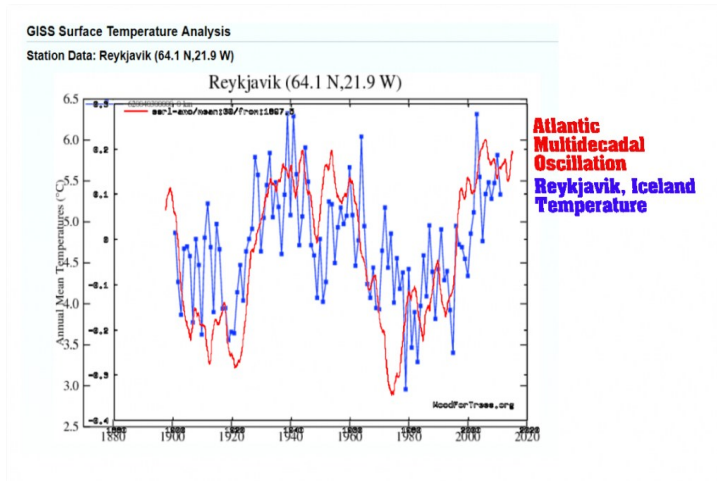
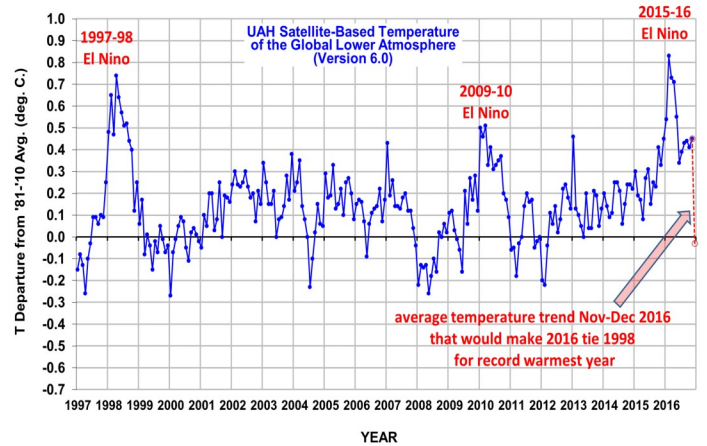
World air temperatures for April were essentially unchanged from those of the prior three months. It appears that the cooling from the unusual high of 2023-4 has now subsided. The data is consistent with a trend line for a rate of temperature rise of 0.16 C/decade since 1979.



Scientists are increasingly realizing that, to understand the changes in world air temperatures, the heat exchange between the air and the oceans must be understood and factored in. But the earth energy budget models currently in use (e.g. IPCC AR6, WGI, p.934, here displayed) assume that this heat exchange does not exist. The IPCC claim is that all the energy imbalance (the 0.7 Watts/square meter) is caused in the air by the greenhouse effect.

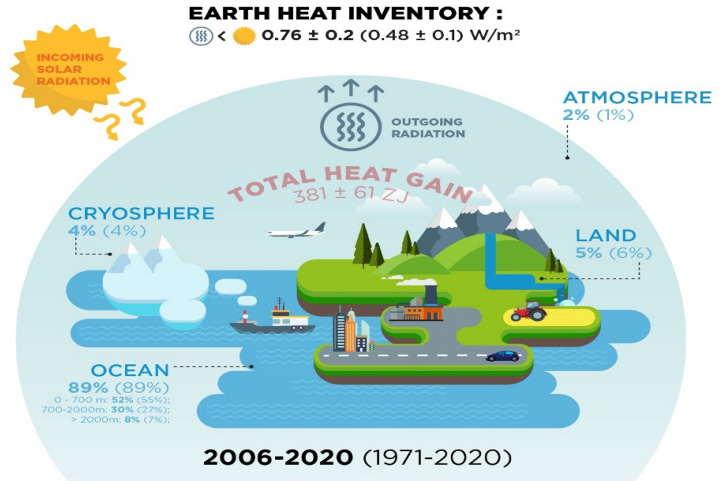


But there clearly is significant and varying heat exchange between the oceans and the atmosphere. Changes in ocean currents, in particularly the El Nino/La Nina cycle, have a demonstrated effect on world air temperatures

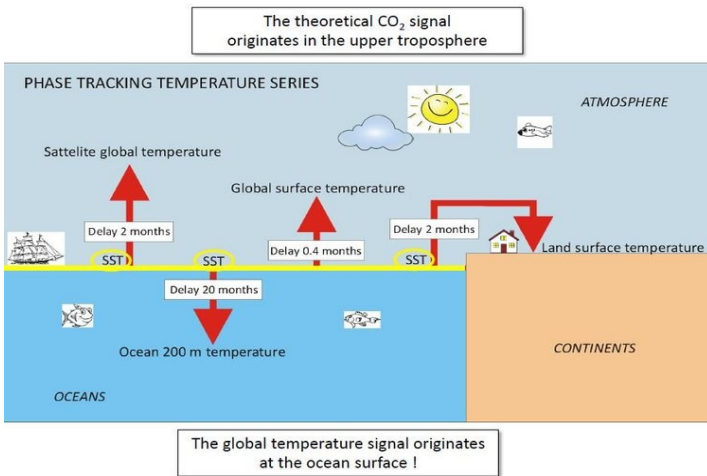


Variations in the Atlantic Multidecadal Oscillation from 1890 to 2020 have a clear effect on air temperatures in Iceland, as shown. And variations in the Pacific Decadal Oscillation have a clear effect on air temperatures on the West coast of Canada and on the Northwest US. The effect of the AMO and the PDO on world temperatures is disputed.

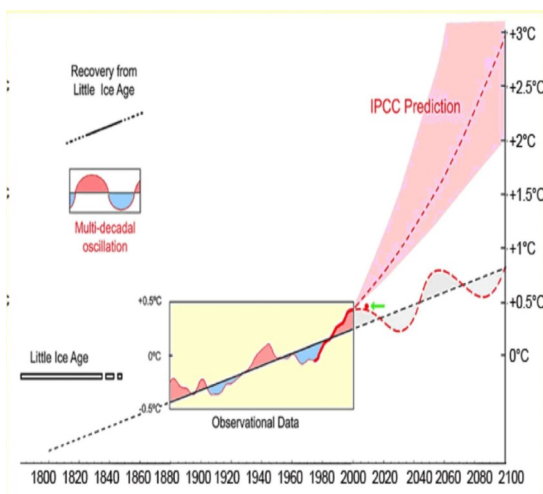
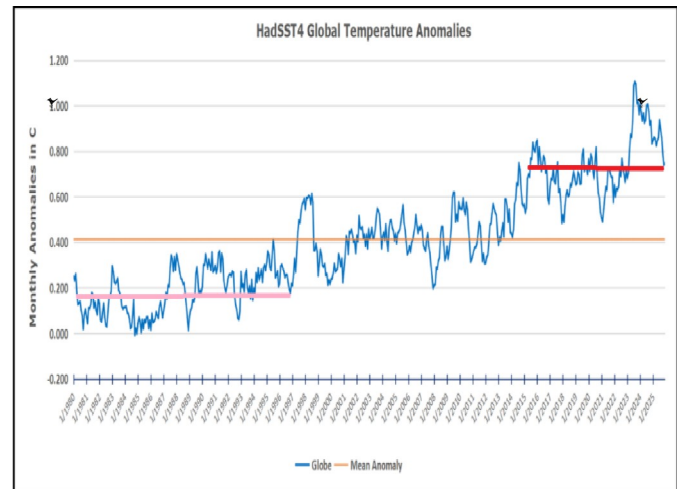
Most of the incoming heat energy from the sun is stored in the oceans - 89% according to this particular study with only 2% being stored in the atmosphere. The heat energy stored in the oceans is concentrated initially in the surface layer.



Then, according to this study, it is the ocean surface layer that raises global surface temperatures with a delay of about 0.4 months. In the upper air and on land the delay is about 2 months, and it takes about 20 months for the warming to spread from the ocean surface layer to the depth of 200 meters.



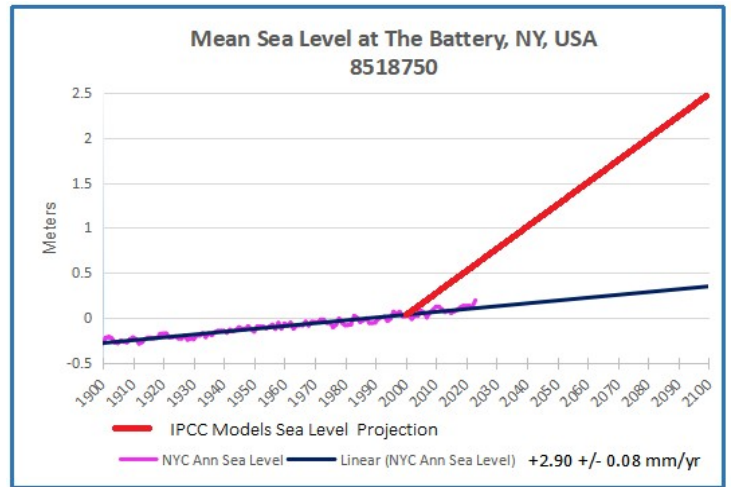
The hypothesis behind this graph is that warming starts in the oceans, and then rises up (as a result of ocean currents such as the El Nino) to the air in steps. This is the reverse of the CO₂ Control Knob Theory, which says that temperature rise starts in the mid to upper atmosphere, where most of the greenhouse gases reside, and then spreads downward. It is becoming increasingly obvious that the heat transfer between the oceans and the atmosphere is a significant cause of global atmospheric warming since the preindustrial period



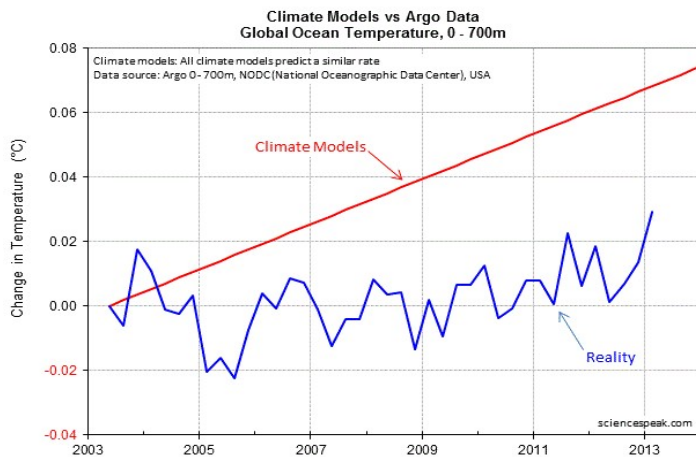
MODELS—THE SOURCE OF THE CRISIS

Prior newsletters have presented evidence that there is no global climate crisis. So where does the claim of a crisis originate? In general, scientists agree on measured data. But they tend to disagree on model projections of the future. It is the models that purport to show an impending crisis. For example, this graph shows two ways to predict future temperatures. If one uses a trend line, temperatures will continue to rise at a slow, steady rate that is arguably beneficial and not problematic. But the models predict a large rise by 2100, which would arguably cause serious problems.

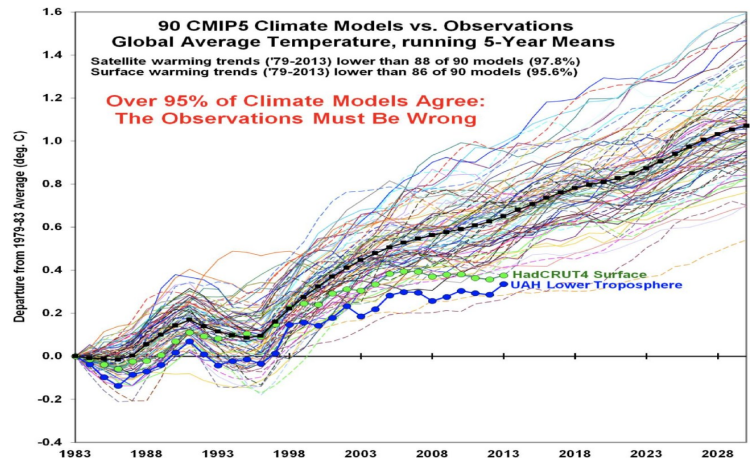
Sea level rise for New York is another example of how model predictions differ substantially from trend line predictions based on measured data. The data shows a long-term, slow rise that is not be of particular concern (2.90 mm/yr, which equals 11 inches per century), but the IPCC models calculate a much great rate of rise.



This graph shows actual measured ocean temperatures versus the ocean temperatures predicted by various climate models.



The models calculating future world temperatures not only calculate much higher temperatures than have been measured, but also there is very substantial disagreement among the numerous models that exist.



This is another presentation showing both that the temperature models produce results substantially higher than the measured data, and also that the models significantly disagree among themselves. There is no consensus among scientists about: (1) the accuracy of the models calculating a future global climate crisis, or (2) which of the disagreeing models is correct. Obviously, if any one of them is correct, then most of them are incorrect.

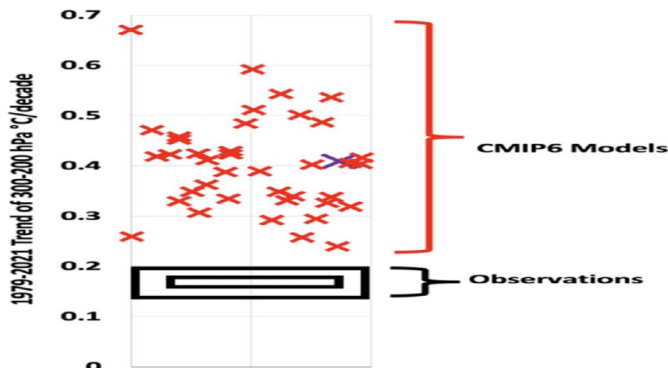
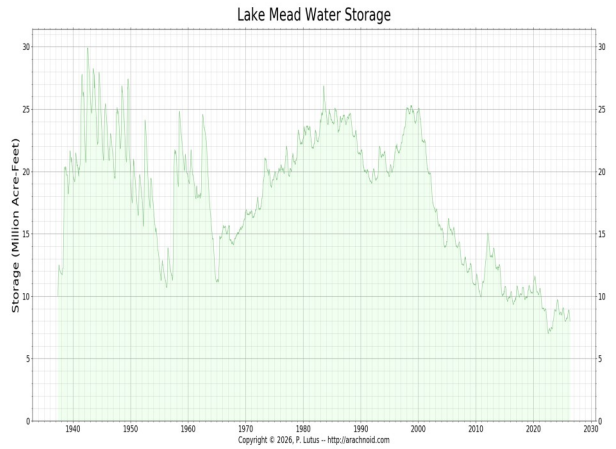


Figure 2: comparison of thirty-five CMIP6 climate model rates of warming from 1979-2021 (each indicated by a red X, with the mean value of all models indicated by a purple X) versus the average value of all real-world observations in the black box. Not a single CMIP6 climate model hits the target matching real-world observations made today. Chart by John Christy, PhD

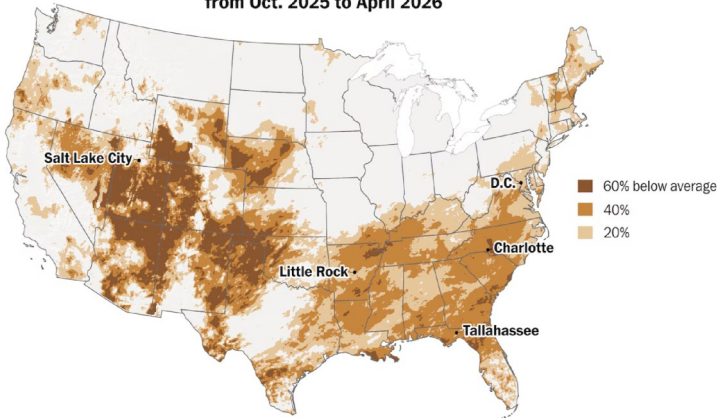
REAL REGIONAL CRISES

The media focus on a supposed global climate crisis, supposedly caused by rising global CO2 levels, and requiring a global response. This distracts attention from real regional climate crises that need to be addressed at the regional or even the local level. Two such regional crises will be discussed in this newsletter - (1) drought in the US Southwest, and (2) river delta subsidence. The problem in the US Southwest is clearly demonstrated by the decline over the last 25 years in the water level at Lake Mead.

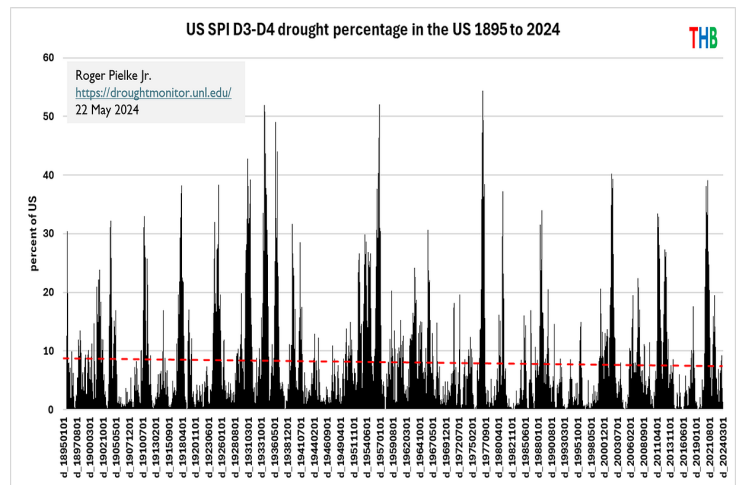


The US Southeast is also experiencing drought, although not as severe as the Southwest.

Precipitation shortfalls from Oct. 2025 to April 2026

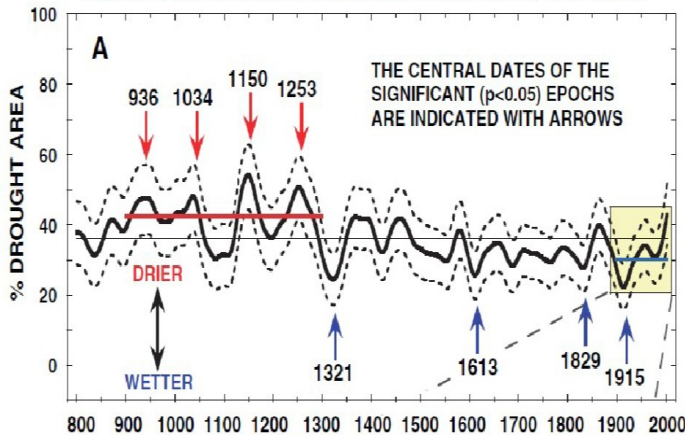


The problem is regional. For the US as a whole there is no trend with respect to extreme drought, but there is great year-to-year variability. The IPCC has found “limited” evidence of global drought trends emerging above natural variability this century. (AR6, WGI, p.1770). And the IPCC also found that in North America dams and other water control projects have reduced flood and drought risks. (AR6, WGII, p.1952)



The US West has a long history of cyclical droughts caused by natural variability. The West was much drier than now 800-1100 years ago. The principal problem now is not climate change, but growing demand for water. Seven states with growing populations and increasing agriculture now look to the Colorado Basin to provide water for 40 million people and 5 million acres of farmland. This is a regional problem that needs to be addressed by collective action of the seven states involved and by the US government.

LONG-TERM CHANGES IN DROUGHT AREA IN THE WEST



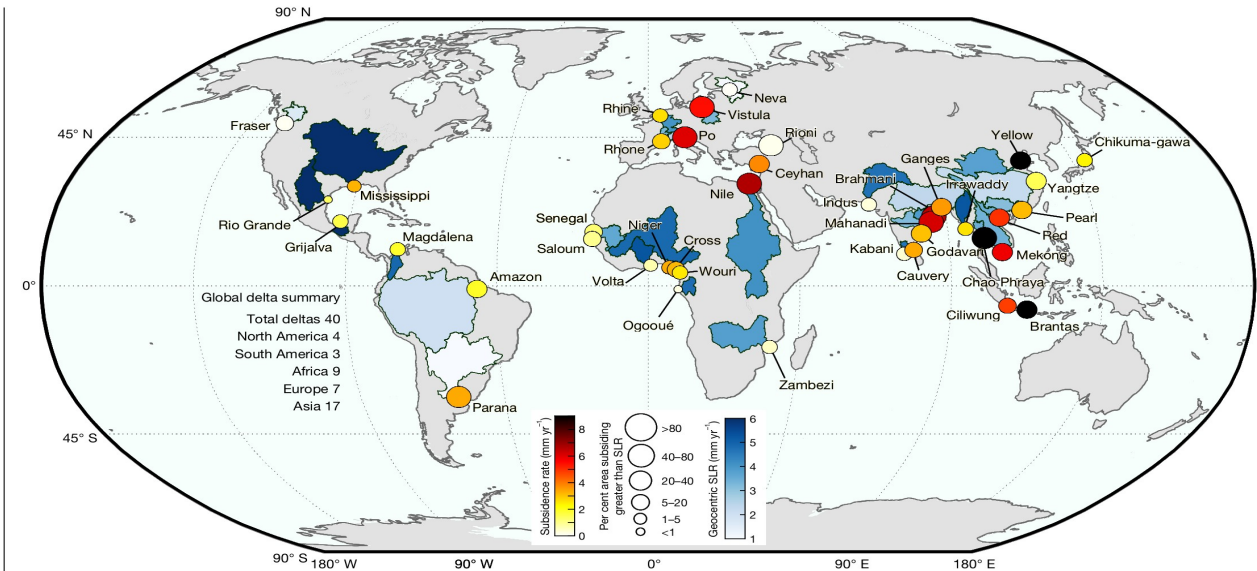


Fig. 1 | Land subsidence in global deltas. Each circle represents the location of the 40 deltas evaluated in this study, colour-coded by the average land subsidence rate. The size of the circle represents the percentage of the delta area subsiding faster than geocentric SLR. For visualization purposes, the geocentric SLR rate is shown as a colour gradient over entire watersheds or

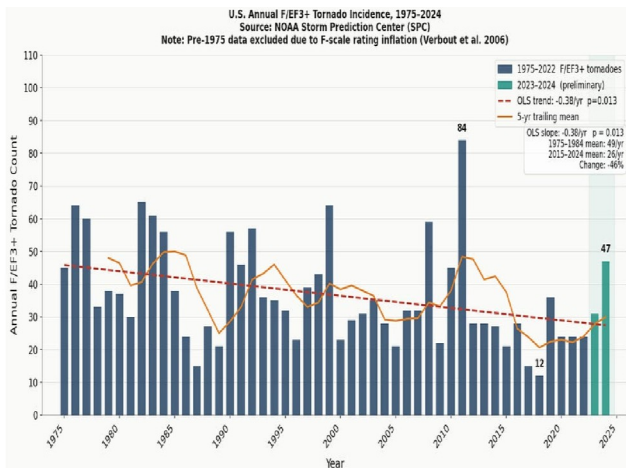
basins, although this does not represent the actual extent of exposure. Global coastlines are based on public-domain data from the CIA World DataBank II (using GSHHG (Global Self-consistent, Hierarchical, High-resolution Geography Database)), distributed with MATLAB. The delta basin polygons were obtained along with the sediment flux dataset from ref. 29.

A second example of regional/national environmental crisis is river delta subsidence. It is common in the major river deltas around the world for the land to be sinking much more than sea levels are rising (SLR). Large cities are commonly located in such deltas. Ground water extraction is the major cause of the subsidence/sinking. The problems of such river deltas can only be addressed by the particular countries where the particular deltas are located. But politicians avoid dealing with the problem by blaming global climate change.

For example, the Ciliwung River (see image above) runs through the heart of Jakarta where an estimated 42 million people live within the contiguous urban area. Over half of the water used comes from groundwater extraction, and parts of the city are sinking at a rate as much as 10 inches per year. In general, tide gauges around the world measure average world sea level rise to be at the rate of 0.08 inches per year (8" per century). Some models predict that by 2050 95% of North Jakarta will be submerged



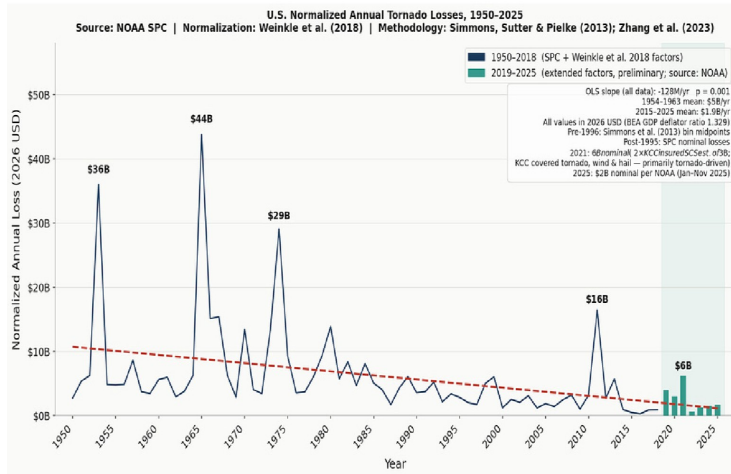
Flooding in Jakarta's Kemayoran district. Photo: ronnisugiharto, iStock.



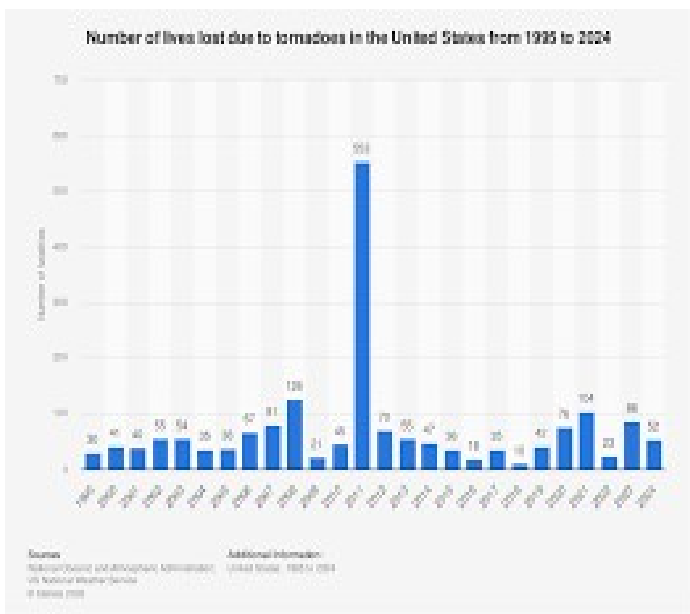
TORNADO UPDATE—NO CRISIS

Preliminary data is now available on strong tornadoes (EF3-5) in the US for 2025. Due to its geography the US has far, far more tornadoes (over 1,200 per year) than any other country. The trend in frequency of strong tornadoes is clearly down with significant variability from year to year. Tornadoes tend to cause less property destruction than hurricanes, because a majority of tornadoes last less than 10 minutes. Many may last only 2-3 minutes. So-called “violent” tornadoes last about 25 minutes, and in exceptional cases more than 3 hours.

Normalized financial losses per year from tornadoes are also trending downward. Tornado losses are much, much less than hurricane losses, because typical tornadoes have a diameter of only about 500 feet (less than the length of two football fields) and travel only about 5 miles from the time they touch down to the time they dissipate.



But tornadoes kill many more people than hurricanes, because it is so difficult to predict when and where tornadoes will strike and to predict how severe they will be. The year 2011 was exceptionally bad with nearly 600 people killed. Over the 30 years from 1995 to 2024 (as shown) there is no clear trend either up or down despite the increases in population in the areas where tornadoes occur and despite improved warning systems.



CONCLUSION

Now even the New York Times is acknowledging that there is no climate change crisis.

The New York Times

OPINION
 GUEST ESSAY

Forget Climate Change. Democrats Need to Talk About Other Issues.

May 9, 2026,
 7:00 a.m. ET



All citations are to the Intergovernmental Panel on Climate Change’s publication, Climate Change 2021 The Physical Science Basis, [the “Sixth Assessment Report” (AR6)].

